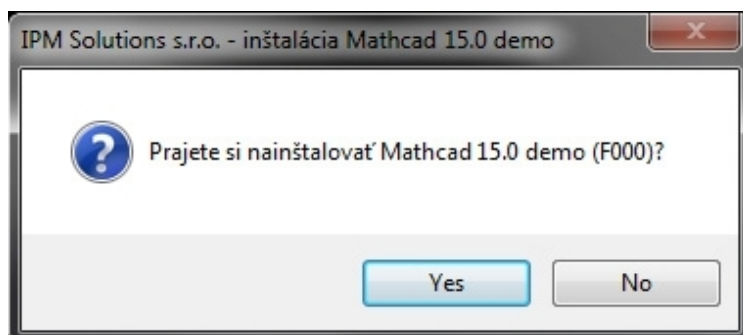
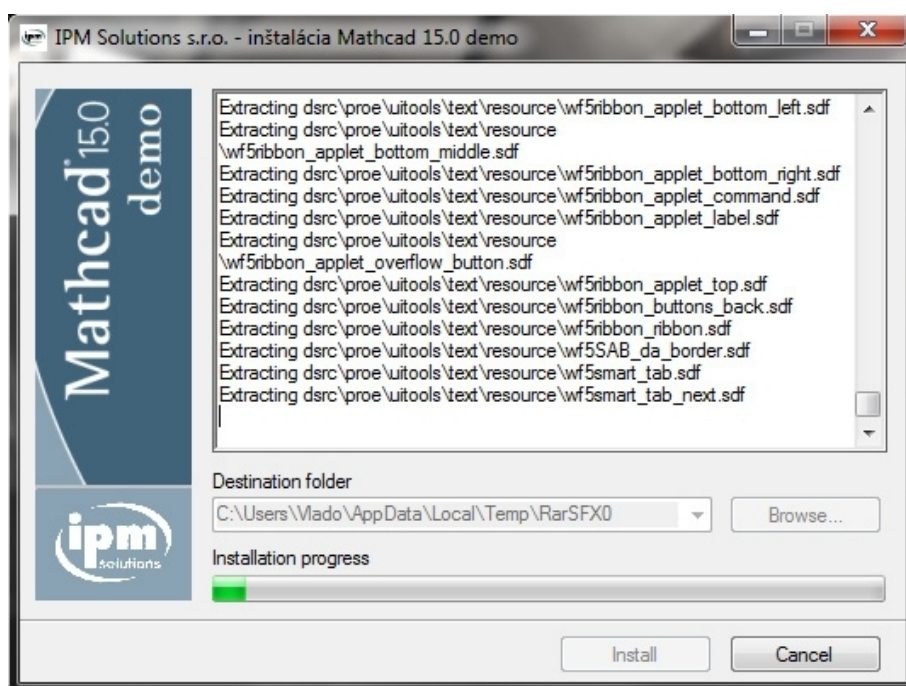


Postup a aktivácia inštalácie TRY OUT (Demo) verzie programu Mathcad 15.0

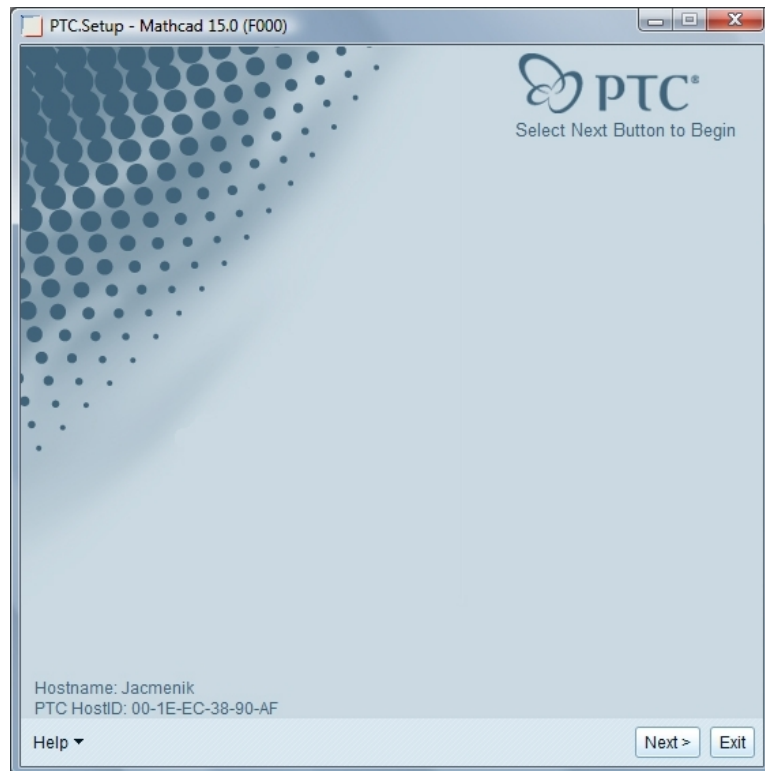
1. Inštaláciu programu **Mathcad** spustíte rozbalením stiahnutého Mathcad15.0_TryOut.rar-súboru na vašom pevnom disku a dvoj-klikom na súbor "**Mathcad15.0_TryOut.exe**".
2. Kliknite na **Yes**.



3. Počkajte pokiaľ systém pripraví potrebné súbory na inštaláciu.



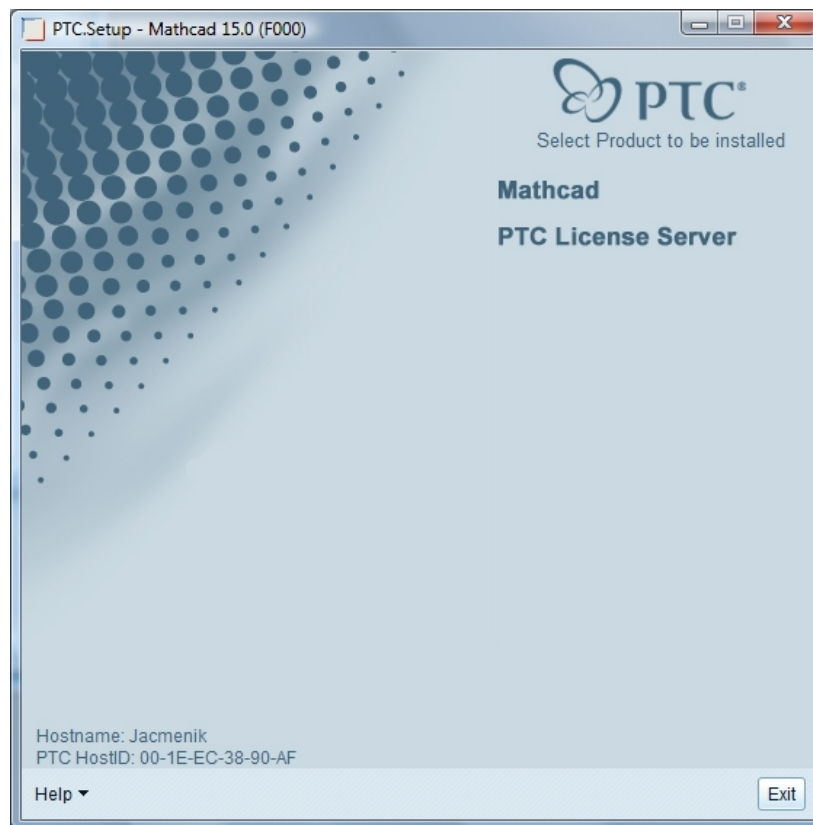
4. Kliknite na **Next**.



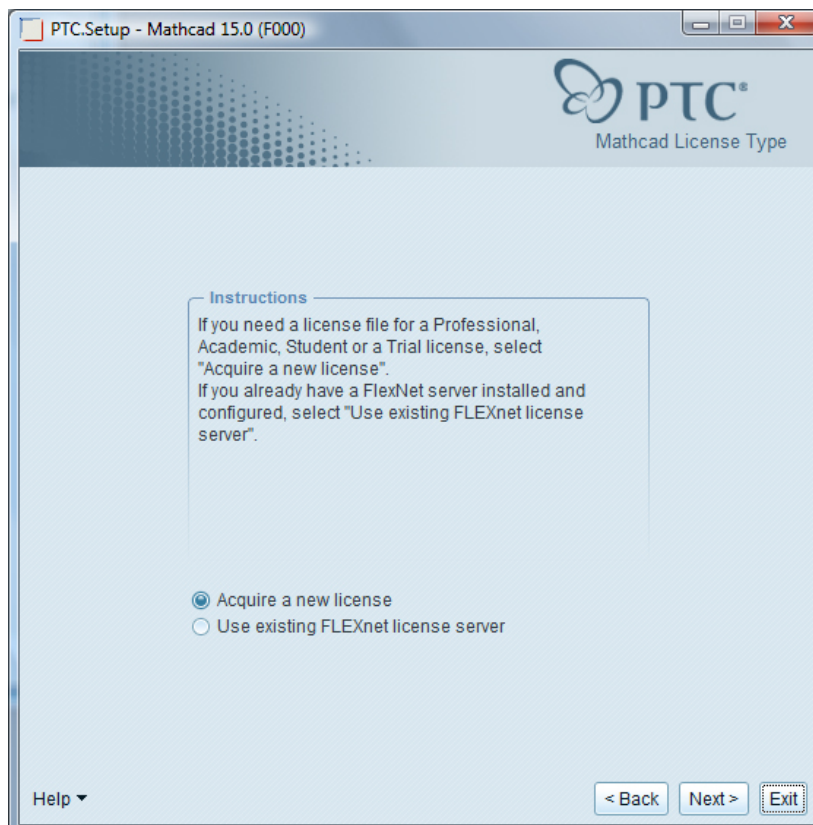
5. V spodnji časti okna zaškrtnite voljo **I Accept** a kliknete na **Next**.



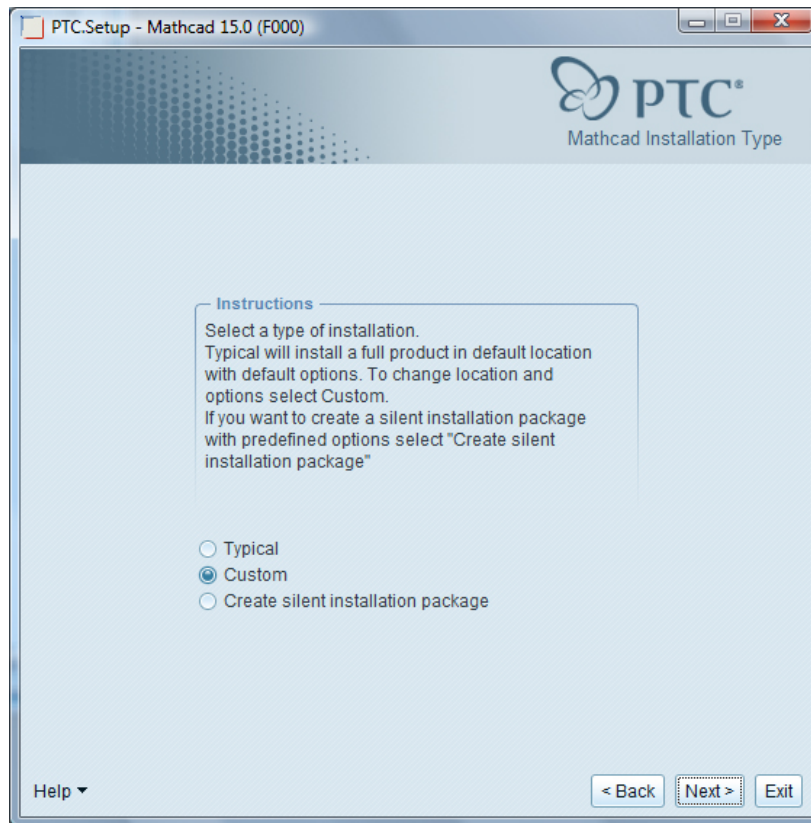
6. Zvoľte inštaláciu **Mathcad**.



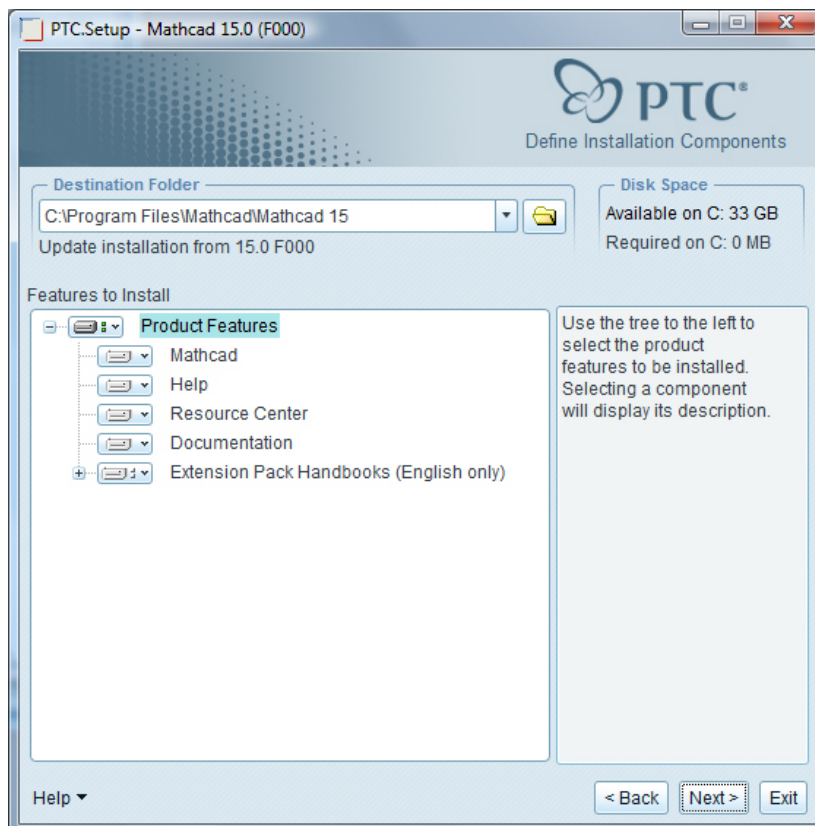
7. Zvoľte **Acquire a new license** pre obdržanie novej licencie a kliknite na **Next**.



8. Ako typ inštalácie zvolíte **Custom** a kliknite na **Next**.



9. Zvoľte alebo ponechajte **cestu**, kde bude program nainštalovaný a kliknite na **Next**.



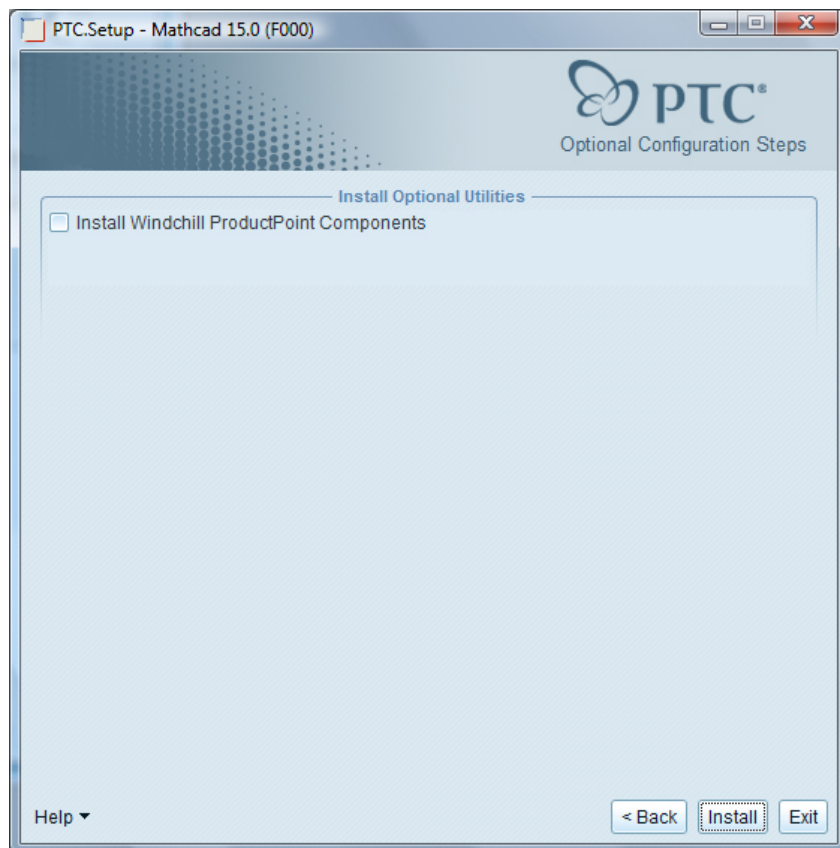
10. Kliknite na **Next**.

The screenshot shows the 'Mathcad Reference Paths' configuration window. It features three text input fields for paths, each with an 'optional alternate location' field to its right. The 'Help Path' field contains 'rogram Files\Mathcad\Mathcad 15\doc'. The 'Resource Center' field contains 'athcad\Mathcad 15\Resource Center'. The 'Templates Path' field contains 'n Files\Mathcad\Mathcad 15\template'. Below these fields is a 'File Format' section with two radio buttons: 'XMCD' (selected) and 'XMCDZ'. At the bottom right, there are three buttons: '< Back', 'Next >', and 'Exit'. A 'Help' dropdown menu is located at the bottom left.

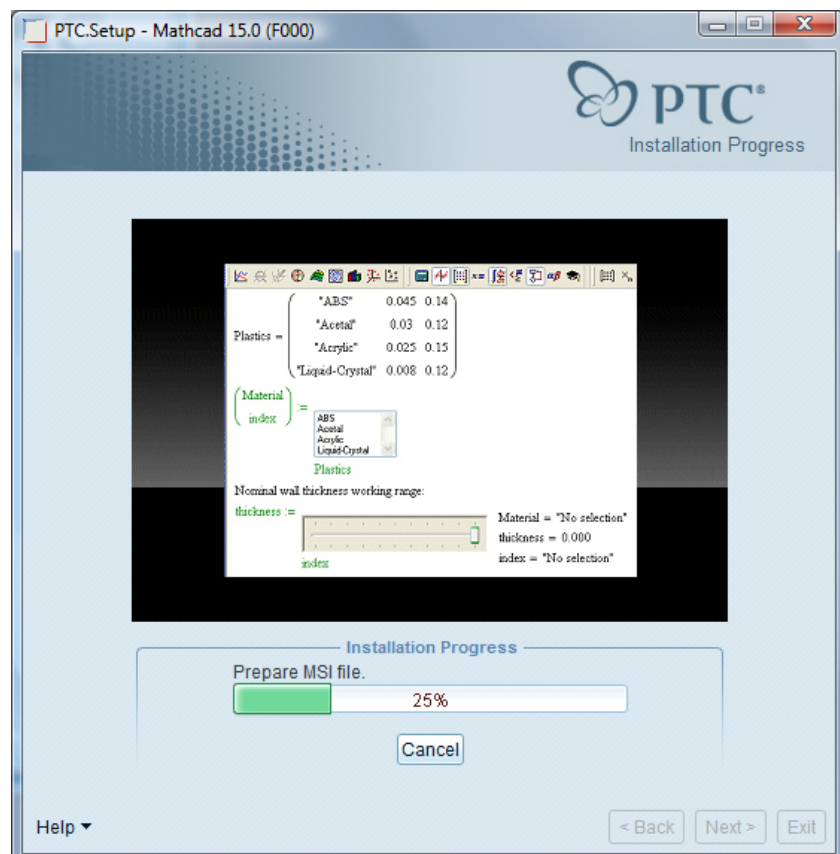
11. Zaškrtnite príslušné políčka pre vytvorenie zástupcu na ploche a v menu „Start“. Kliknite na **Next**.

The screenshot shows the 'Windows Preferences' configuration window. It includes an 'Instructions' section with the text: 'Program shortcuts will be created for Mathcad startup commands. Select the location where you would like these shortcuts to be placed. Change the startup directory to a dedicated folder that all users have read and write access to.' Below this is the 'Windows Shortcut Preferences' section, which contains a 'Shortcut Location(s)' label and three checked checkboxes: 'Desktop', 'Start menu', and 'Quick Launch'. At the bottom right, there are three buttons: '< Back', 'Next >', and 'Exit'. A 'Help' dropdown menu is located at the bottom left.

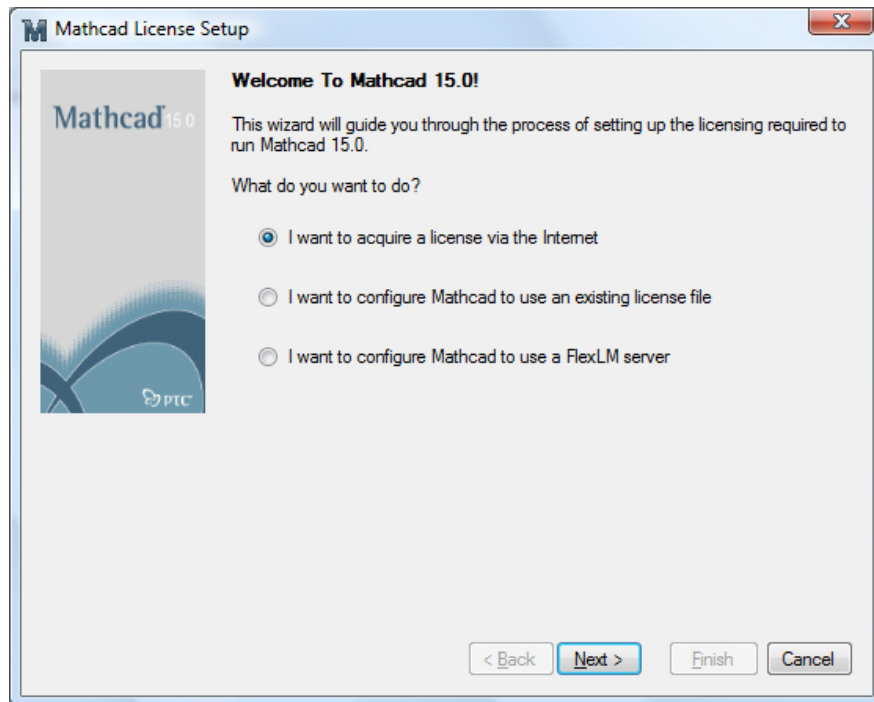
12. Odškrtnite políčko pre inštaláciu Windchill ProductPoint komponentov. Kliknite na **Install**.



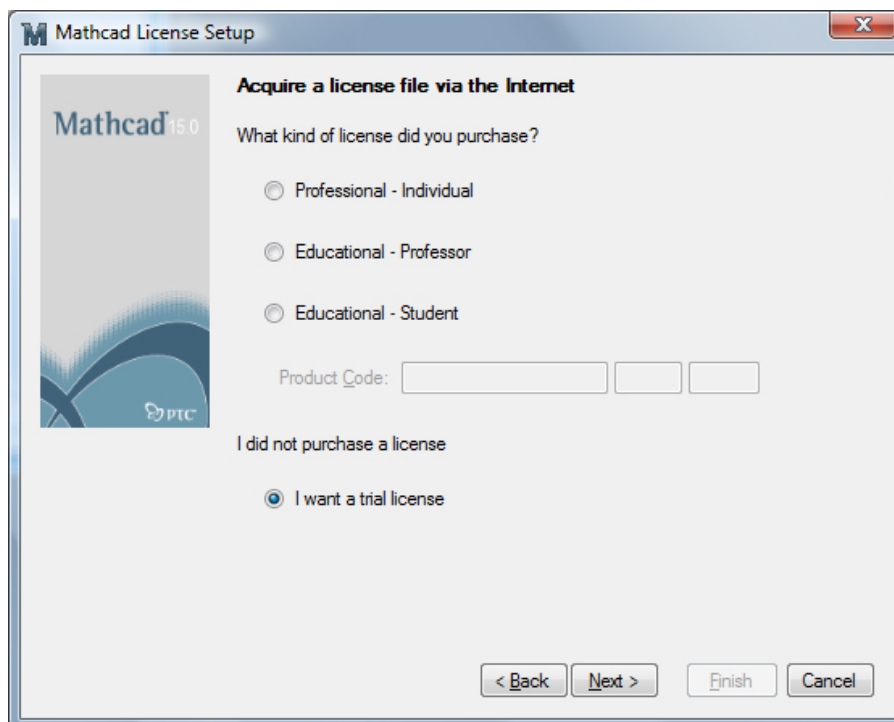
13. Počkajte pokiaľ systém dokončí inštaláciu.



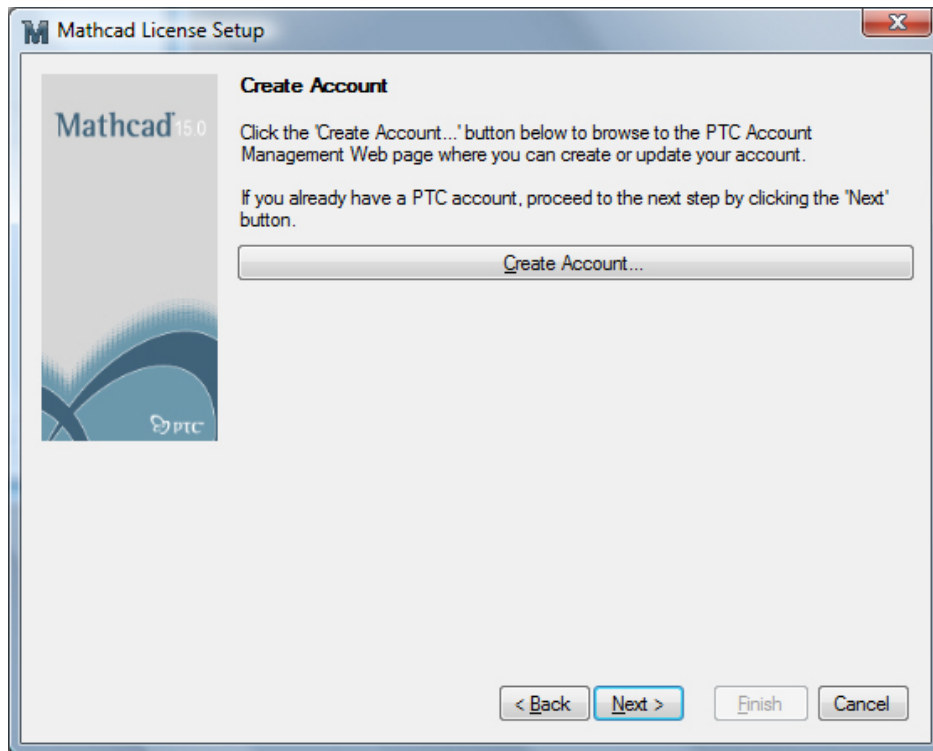
14. Po dokončení inštalácie sa automaticky spustí sprievodca licencií, kde zvolíte ***I want acquire a license via Internet*** a potom kliknite na ***Next***.



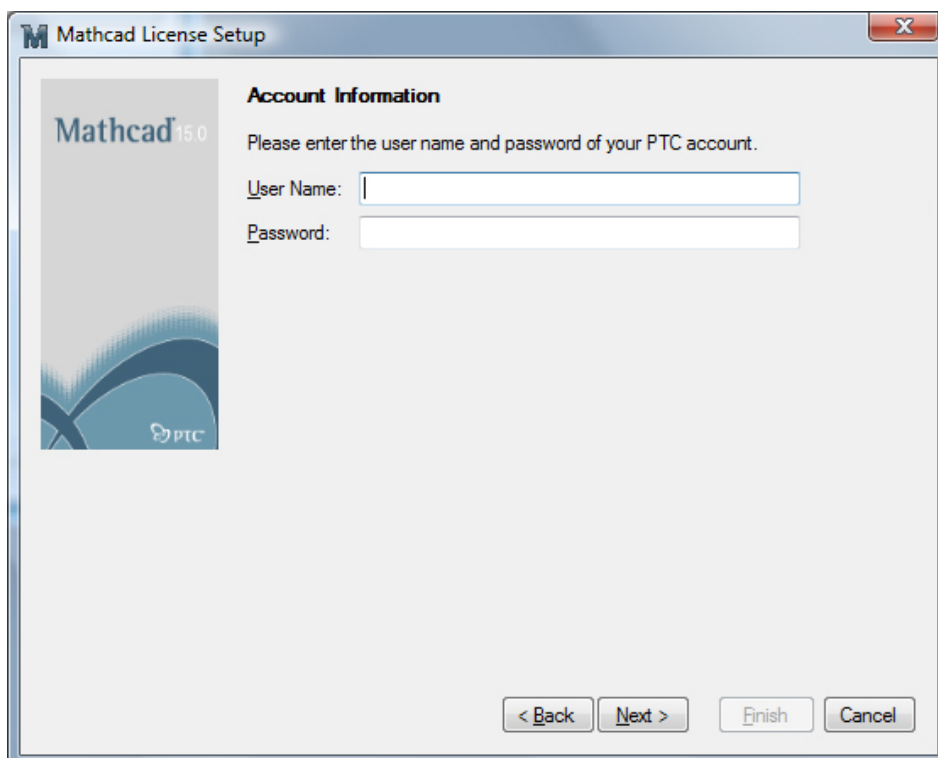
15. Zvoľte ***I want a trial license*** a potom kliknite na ***Next***.



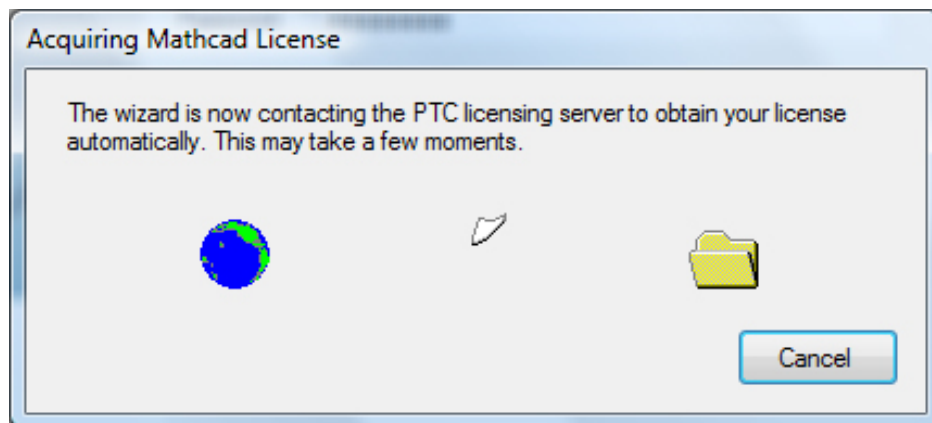
16. Ak nemáte vytvorené **konto** na PTC stránke , kliknite na **Create Account** pre vytvorenie. Ak áno, pokračujte kliknutím na **Next**.



17. Zadajte svoje **užívateľské meno** (e-mailová adresa) a **heslo** (vytvorené pri registrácii na PTC) a kliknite na **Next**.



18. Chvíľu počkajte pokiaľ neprebehne obdržanie licencie cez internet.



19. Kliknite na **Finish** pre dokončenie a aktiváciu Mathcad TryOut verzie.

