

Creo® Options Modeler

CREATE AND VALIDATE MODULAR PRODUCTS

Creo Options Modeler is a dedicated app for creating and validating 3D modular products. By creating reusable product modules and defining how they interface and assemble, designers can quickly create and validate any customer-specific product.

Design engineers need to respond to many challenges when developing products, especially in dynamic, competitive environments with increasingly diverse and varied needs of new markets or new customer opportunities. By using a modular product approach to design, they can reduce complexity while still providing a broad range of product offerings—without significant increases in cost or complexity.

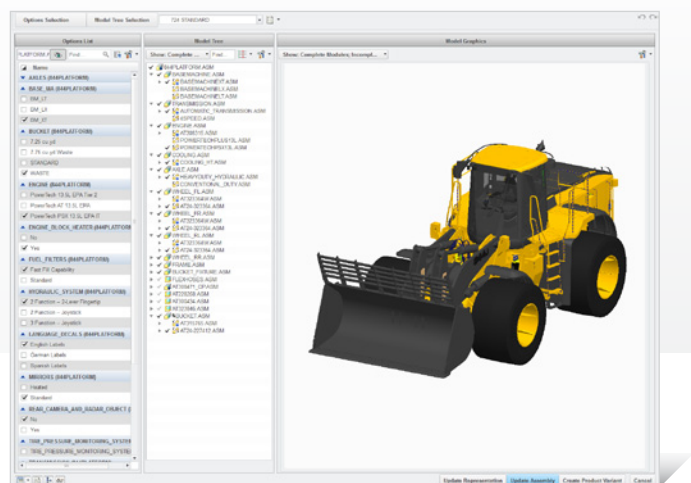
When combined with Windchill®, PTC’s product lifecycle management software, Creo Options Modeler enables manufacturers to generate and validate precise 3D representations of product configurations defined by an individual bill of materials (BOM).

The combination of Creo Options Modeler with Creo Parametric enables designers to validate the resulting product by checking properties such as the precise mass and center of gravity—and even checking and resolving critical areas such as interference.

As a member of the Creo product family, Creo Options Modeler seamlessly leverages and shares data between other Creo apps and with other people involved in the design process and beyond, further increasing detailed design and downstream process productivity.

Key benefits

- Achieve faster design cycles by creating and validating product modules in 3D early in the design phase
- Reduce process errors and engineering rework by directly reusing available 3D models from Creo, as well as BOM and business logic for product configurations from Windchill
- Automate the creation of any product by defining common architecture and product modules and help manage how they interface and assemble
- Optimize products earlier by automating manually intensive, error-prone tasks
- Communicate precisely by sharing product designs earlier and receiving feedback from other internal teams, suppliers and customers



Couple allowable product options, parts structure, and 3D models.

Features and specifications

Fully visualize the modular product architecture

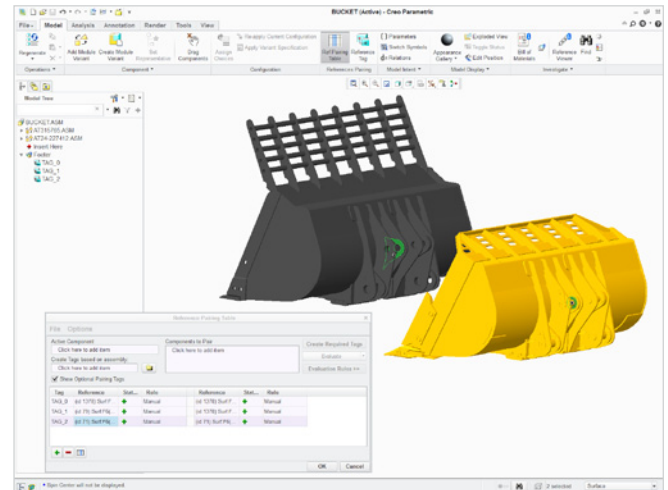
- View and interact with all relevant information in one integrated environment
 - Modular product architectures
 - 3D models
 - Bill of materials*
- Select from available product modules and precisely visualize the resulting product in 3D

Flexibly create and change the modular product architecture

- Create the modular product architecture through a top-down or bottom-up design approach
 - Top-Down: Ideal for creating new products; create the top-level modular product architecture independent of individual modules and models*
 - Bottom-Up: Ideal for adding new product modules with existing products; create individual modules independent of the top-level product architecture
- Create new modular product architectures by reusing existing products
 - From CAD, directly use existing parts and assemblies from Creo
 - From PLM, directly use individual bill of materials*
- Change, add or remove product modules from the modular product architecture

Accelerate assembly in 3D

- Define how product modules interface and assemble with each other to quickly create and validate any customer-specific product
- Defined once, interfaces and assembly tags are applied to all related product modules



Create configurable modules to easily manage multiple options.

Validate the modular product architecture

- Generate any modular product as a precise 3D representation; in Creo Parametric, validate mass, center of gravity, interference and other critical areas
- Use the resulting 3D model in other Creo Apps for downstream activities such as simulation and manufacturing

Leverage existing bill of materials

- Generate a modular product architecture as defined by an individual bill of materials*

* Requires Windchill

Platform support and system requirements

Visit our [support page](#) for platform support and system requirements.

To learn more:

For more information, visit: [PTC.com/product/creo](https://www.ptc.com/product/creo)

© 2012, Parametric Technology Corporation (PTC). All rights reserved. Information described herein is furnished for informational use only, is subject to change without notice, and should not be construed as a guarantee, commitment, condition or offer by PTC. PTC, the PTC logo, Creo, Windchill, and all PTC product names and logos are trademarks or registered trademarks of PTC and/or its subsidiaries in the United States and in other countries. All other product or company names are property of their respective owners. The timing of any product release, including any features or functionality, is subject to change at PTC's discretion.

7464 – Creo Options Modeler DS – EN – 0312