

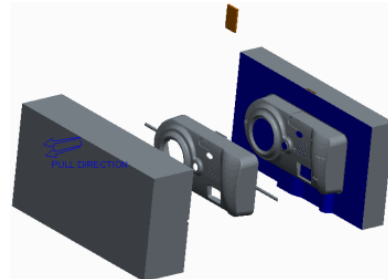
Mold Design using Creo Parametric

Overview

Course Code TRN-3424-T

Course Length 2 Days

The Mold application provides the tools to create a mold model from start to finish by using the mold design process within Creo Parametric. In this course, you will learn how to create, modify, and analyze mold components and assemblies. Any changes made to the design model automatically propagate to the mold components and assemblies. You will learn how to create final extract components that reflect the geometry of the design model, along with shrinkage considerations, adequate drafting, mold features, and cooling systems. After completing the course, you will have a better understanding of the mold design process and how to create molded products by using the mold design process. At the end of each module, you will complete a skills assessment. The questions are used to help reinforce your understanding of the module topics and form the basis for review of any topics, if necessary.



Course Objectives

- Learn the basic mold process
- Prepare design models for the mold process
- Analyze design models to ensure their readiness for molding
- Create mold models
- Apply shrinkage to the reference model
- Create and assemble workpieces into the mold model
- Create mold volumes
- Create parting lines and parting surfaces
- Split mold volumes
- Extract mold components
- Create mold features
- Learn how to fill and open the mold

Prerequisites

- Introduction to Creo Parametric
 - Basic understanding of industry standard Mold design terminology and processes
 - Knowledge of Creo Parametric surfacing techniques a plus
-

Audience

- This course is intended for designers, machinists, and manufacturing engineers. The topics in this course are also available as a Web-based training course.
-

Agenda

Day 1

Module	1	Introduction to the Creo Parametric Basic Mold Process
Module	2	Design Model Preparation
Module	3	Design Model Analysis
Module	4	Mold Models
Module	5	Shrinkage
Module	6	Workpieces
Module	7	Mold Volume Creation

Day 2

Module	8	Parting Line and Parting Surface Creation
Module	9	Splitting Mold Volumes
Module	10	Mold Component Extraction
Module	11	Mold Features Creation
Module	12	Filling and Opening the Mold
