

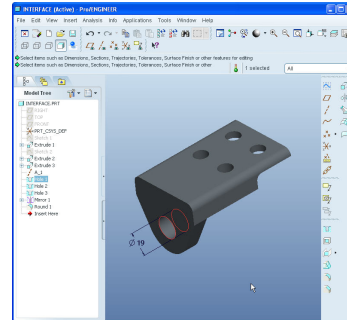
# Creo Elements/Pro 5.0 (formerly Pro/ENGINEER Wildfire 5.0) Update from Pro/ENGINEER Wildfire 2.0

## Overview

Course Code TRN-2248-T

Course Length 3 Days

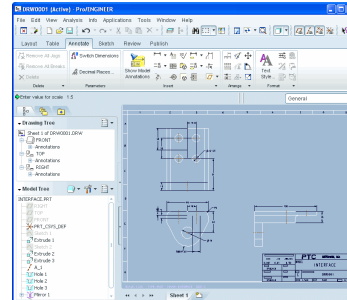
In this course, you will learn how to utilize the core functionality enhancements in Pro/ENGINEER Wildfire 5.0, when upgrading from Pro/ENGINEER Wildfire 2.0. First, changes to the interface will be explored, such as the new skin and screen colors. Next, you will become familiar with the enhancements to Sketcher geometry and tools, such as sketching parallelograms and chamfers, as well as using the sketcher diagnostic tools. Next, you will explore enhancements to Part mode, including creating trajectory ribs, pattern and UDF enhancements, the all-new resolve mode, and auto-round. You will also learn about the Assembly dashboard interface and other assembly enhancements such as the accessory window, the new reference viewer, improved simplified rep functionality, and mechanism enhancements to gears and belts. Next, you will examine the new ribbon interface and drawing tree for drawing mode, as well as numerous detailing enhancements. Finally, you will review Sheetmetal enhancements for flat and flange walls, in addition to patterning and mirroring wall features. At the end of each module, you will complete a skills assessment. The questions are used to help reinforce your understanding of the module topics and form the basis for review of any topics, if necessary.



## Course Objectives

---

- Describe the Interface Enhancements for Pro/ENGINEER Wildfire 5.0
- Utilize the Sketcher Geometry Enhancements for Pro/ENGINEER Wildfire 5.0
- Utilize the Sketcher Tools Enhancements for Pro/ENGINEER Wildfire 5.0
- Utilize the Part Modeling Enhancements for Pro/ENGINEER Wildfire 5.0
- Utilize the Feature Duplication Enhancements for Pro/ENGINEER Wildfire 5.0
- Utilize the Advanced Part Enhancements for Pro/ENGINEER Wildfire 5.0
- Utilize the Assembly Modeling Enhancements for Pro/ENGINEER Wildfire 5.0
- Utilize the Advanced Assembly Enhancements for Pro/ENGINEER Wildfire 5.0
- Resolve model failures in Pro/ENGINEER Wildfire 5.0
- Utilize the Drawing Sheet and View Enhancements for Pro/ENGINEER Wildfire 5.0
- Utilize the Drawing Detailing Enhancements for Pro/ENGINEER Wildfire 5.0
- Utilize the Sheetmetal Enhancements for Pro/ENGINEER Wildfire 5.0



## Prerequisites

---

- Introduction to Pro/ENGINEER Wildfire 2.0 or equivalent experience.

## Audience

---

- This course is intended for people who have already upgraded to Pro/ENGINEER Wildfire 5.0 from Pro/ENGINEER Wildfire 2.0.

## Agenda

### Day 1

---

Module 1 Interface Enhancements

Module 2 Sketcher Geometry Enhancements

Module 3 Sketcher Tools Enhancements

Module 4 Part Modeling Enhancements

### Day 2

---

Module 5 Feature Duplication Enhancements

Module 6 Advanced Part Modeling Enhancements

Module 7 Assembly Enhancements

Module 8 Advanced Assembly Enhancements

### Day 3

---

Module 9 Resolving Failures

Module 10 Drawing Sheet and View Enhancements

Module 11 Drawing Detail Enhancements

Module 12 Sheetmetal Enhancements

---