

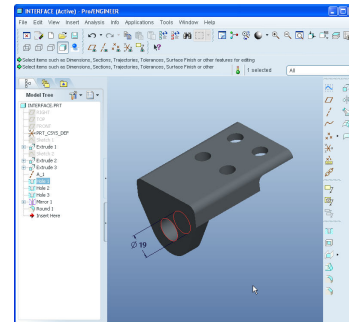
Creo Elements/Pro 5.0 (formerly Pro/ENGINEER Wildfire 5.0) Update from Pro/ENGINEER Wildfire 4.0

Overview

Course Code TRN-2230-T

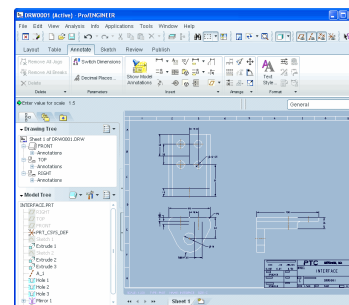
Course Length 1 Day

In this course, you will learn how to utilize the core functionality enhancements in Pro/ENGINEER Wildfire 5.0. First, you will become familiar with the enhancements to Sketcher, such as sketching datum features, parallelograms, and chamfers. Next, you will explore enhancements to Part mode, including creating trajectory ribs, point patterns, and the all-new resolve mode. You will also learn about new and enhanced Assembly capabilities such as the accessory window, the new explode interface, and enhancements to component repeat and restructure. Finally, you will examine the new ribbon interface for 2-D drawings, and review Sheetmetal enhancements such as patterning and mirroring wall features. At the end of each module, you will complete a skills assessment. The questions are used to help reinforce your understanding of the module topics and form the basis for review of any topics, if necessary.



Course Objectives

- Describe the Interface Enhancements for Pro/ENGINEER Wildfire 5.0
- Utilize the Sketcher Enhancements for Pro/ENGINEER Wildfire 5.0
- Utilize the Part Modeling Enhancements for Pro/ENGINEER Wildfire 5.0
- Utilize the Assembly Modeling Enhancements for Pro/ENGINEER Wildfire 5.0
- Resolve model failures in Pro/ENGINEER Wildfire 5.0
- Utilize the Drawing Enhancements for Pro/ENGINEER Wildfire 5.0
- Utilize the Sheetmetal Enhancements for Pro/ENGINEER Wildfire 5.0



Prerequisites

- Introduction to Pro/ENGINEER Wildfire 4.0 or equivalent experience.

Audience

- This course is intended for people who have already upgraded to Pro/ENGINEER Wildfire 5.0 from Pro/ENGINEER Wildfire 4.0.
-

Agenda

Day 1

Module	1	Interface Enhancements
Module	2	Sketcher Enhancements
Module	3	Part Modeling Enhancements
Module	4	Resolving Failures
Module	5	Assembly Enhancements
Module	6	Drawing Enhancements
Module	7	Sheetmetal Enhancements
