

creo™ elements/direct™

Curriculum Guide

Live Classroom Curriculum Guide

- Update to Creo Elements/Direct 18.0 from Creo Elements/Direct 17.0
 - Introduction to Creo Elements/Direct 18.0 Modeling
 - Annotation using Creo Elements/Direct 18.0
 - Introduction to Creo Elements/Direct 18.0 Model Manager
-

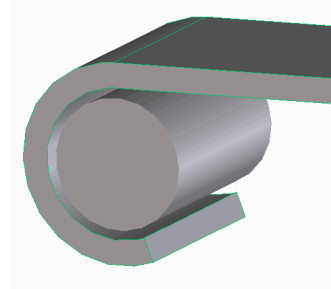
Update to Creo Elements/Direct 18.0 from Creo Elements/Direct 17.0

Overview

Course Code TRN-3417-T

Course Length 1 Day

This course is intended to introduce and feature new functions and updates to Creo Elements/Direct Modeling 18.0. You will learn about the user interface changes. You will learn about the improvements to modeling commands. You will also learn about improvements to the Sheet Metal module.



Course Objectives

- Learn the updated user interface.
- Understand new 2-D commands.
- Understand enhancements to modification commands.
- Learn the new Sheet Metal functions.
- Understand updates to data import and export options.

Prerequisites

- Must have prior experience with Creo Elements/Direct Modeling.
- Sheet Metal module experience is not required, but highly encouraged.

Audience

- Designers
 - Mechanical engineers
 - Industrial designers
 - Tooling designers
-

Agenda

Day 1

Module	1	Using Modeling
Module	2	Modeling
Module	3	Module Updates

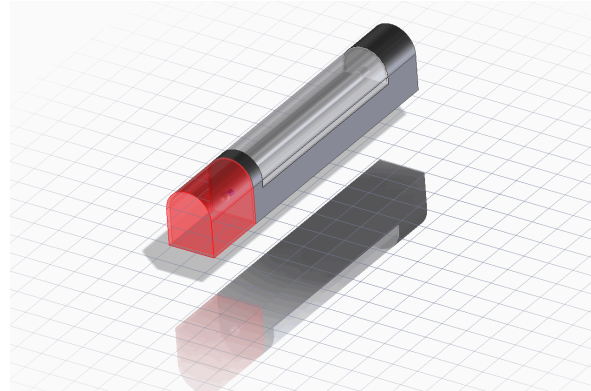
Introduction to Creo Elements/Direct 18.0 Modeling

Overview

Course Code TRN-3418-T

Course Length 3 Days

Introduction to Creo Elements/Direct Modeling is a course that will teach you the basics about 3-D design using Creo Elements/Direct Modeling. You will learn about Creo Elements/Direct's explicit approach to 3-D design and the basics of working with workplanes and 2-D. Using the intuitive interface, you will learn how to build and modify parts and assemblies. You will also be instructed on tips and best practices. After completing this course, you will have an understanding of the explicit modeling approach of Creo Elements/Direct Modeling, and be able to design functional and manufacturable products using this tool.



Course Objectives

- Understand the explicit modeling approach of Creo Elements/Direct Modeling.
- Create workplanes by various methods.
- Create and modify 2-D using 2D CoPilot.
- Create parts from 2-D using Machine commands.
- Modify parts with Blends, Chamfers, face modifications, and face booleans.
- Create and modify assemblies.
- Customize the user interface.

Prerequisites

- Must be able to interpret engineering drawings, and have an understanding of drafting concepts.
- Must have experience in the development of 2-D design using a CAD system.
- Prior use of another 3-D CAD system is helpful, but not required.

Audience

- Designers
 - Mechanical engineers
 - Industrial designers
 - Illustrators
 - Tooling designers
-

Agenda

Day 1

Module	1	Introducing Modeling
--------	---	----------------------

Module	2	Introduction to Workplane, 2-D, and Machine
--------	---	---

Day 2

Module	3	Modify 3D
--------	---	-----------

Day 3

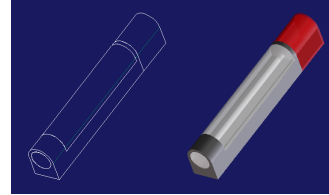
Module	4	Parts and Assembly
--------	---	--------------------

Module	5	User Interface Customizations
--------	---	-------------------------------

Annotation using Creo Elements/Direct 18.0

Overview

Course Code	TRN-3419-T
Course Length	2 Days



CoCreate Annotation is a course that will teach you 2-D drawing creating using CoCreate Annotation. Create multiple-sheet drawings. Generate various types of primary and dependant views with different types of update modes. You will also learn how to add all types of annotations to your drawing, ranging from dimensions, additional geometry and text, symbols, pictures, and even OLE objects. You will complete the design cycle by updating a drawing after modifying the 3-D model. You will finally conclude by adding a BOM to your assembly drawing. You will have a full understanding of the CoCreate drawing creation process.

At the end of each module, you will complete a skills assessment. The questions are used to help reinforce your understanding of the module topics and form the basis for review of any topics, if necessary.

Course Objectives

- Create drawings of 3-D models using CoCreate Annotation
- Create and update various types of views
- Add annotations necessary to complete the drawing
- Add a BOM to an assembly drawing

Prerequisites

- Must be able to interpret engineering drawings, and have an understanding of drafting concepts
- Must have experience in the development of 2-D design using a CAD system
- Prior use or of CoCreate Modeling

Audience

- Designers
 - Drafters
 - Mechanical engineers
 - Industrial designers
 - Illustrators
 - Tooling designers
-

Agenda

Day 1

Module	1	Introduction To Annotation And User Interface Customizations
Module	2	Creating an Annotation Drawing
Module	3	Creating Annotation Views

Day 2

Module	4	Adding Annotations
Module	5	Adding BOM

Introduction to Creo Elements/Direct 18.0 Model Manager

Overview

Course Code	TRN-3420-T
Course Length	2 Days

In this course, you will learn how to manage, search, load, and save Elements/Direct data. You will learn how to manage multiple versions and various data types. You will learn to work with others by monitoring data, managing permissions, passing data, and resolving potential conflicts. You will also learn how to create and edit a BOM using the BOM Editor. After completing this course, you will have a full understanding of the Elements/Direct data management process. At the end of each module, you will complete a skills assessment. The questions are used to help reinforce your understanding of the module topics and form the basis for review of any topics, if necessary.

Course Objectives

- Save various types of data.
- Search for data.
- Load data.
- Teamwork methodology.
- Manage Annotation data.
- Data conflict resolution.
- BOM building using BOM Editor.
- Task creation and scheduling.

Prerequisites

- Prior use or knowledge of Elements/Direct Modeling, and Annotation.
- Prior use of other data management software not required, but is beneficial.

Audience

- Designers
 - Drafters
 - Mechanical engineers
 - Industrial designers
 - Illustrators
 - Tooling designers
-

Agenda

Day 1

Module	1	Introduction To Model Manager And User Preferences
Module	2	Saving, Finding, And Loading In Model Manager
Module	3	Team Work In Model Manager And Database Properties
Module	4	Annotation Data In Model Manager
Module	5	Conflict Resolution In Model Manager

Day 2

Module	6	Working with Packets in Model Manager
Module	7	Working with Projects in Model Manager
Module	8	Bill Of Material Editor
Module	9	Setting Up Task Agent

Web Based Curriculum Guide

- Update to Creo Elements/Direct 18.0 from Creo Elements/Direct 17.0
- Introduction to Creo Elements/Direct 18.0 Modeling
- Annotation using Creo Elements/Direct 18.0



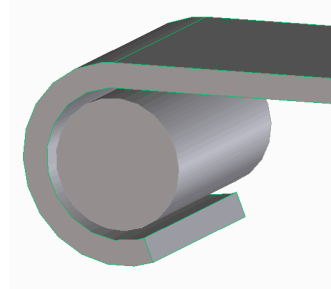
Update to Creo Elements/Direct 18.0 from Creo Elements/Direct 17.0

Overview

Course Code WBT-3417

Course Length 8 Hours

This course is intended to introduce and feature new functions and updates to Creo Elements/Direct Modeling 18.0. You will learn about the user interface changes. You will learn about the improvements to modeling commands. You will also learn about improvements to the Sheet Metal module.



Course Objectives

- Learn the updated user interface.
- Understand new 2-D commands.
- Understand enhancements to modification commands.
- Learn the new Sheet Metal functions.
- Understand updates to data import and export options.

Prerequisites

- Must have prior experience with Creo Elements/Direct Modeling.
- Sheet Metal module experience is not required, but highly encouraged.

Audience

- Designers
 - Mechanical engineers
 - Industrial designers
 - Tooling designers
-

Table of Contents

Module	1	Using Modeling
Module	2	Modeling
Module	3	Module Updates

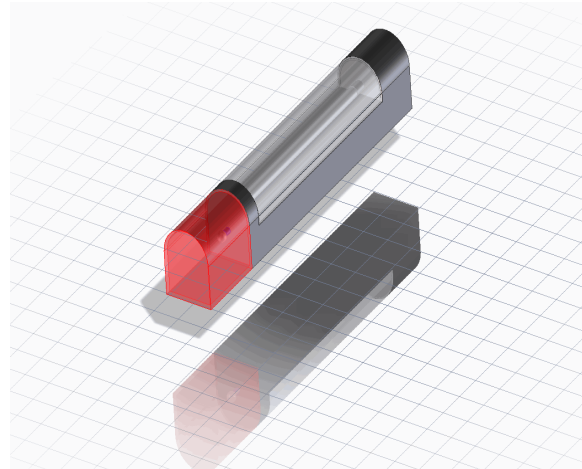
Introduction to Creo Elements/Direct 18.0 Modeling

Overview

Course Code WBT-3418

Course Length 24 Hours

Introduction to Creo Elements/Direct Modeling is a course that will teach you the basics about 3-D design using Creo Elements/Direct Modeling. You will learn about Creo Elements/Direct's explicit approach to 3-D design and the basics of working with workplanes and 2-D. Using the intuitive interface, you will learn how to build and modify parts and assemblies. You will also be instructed on tips and best practices. After completing this course, you will have an understanding of the explicit modeling approach of Creo Elements/Direct Modeling, and be able to design functional and manufacturable products using this tool.



Course Objectives

- Understand the explicit modeling approach of Creo Elements/Direct Modeling.
- Create workplanes by various methods.
- Create and modify 2-D using 2D CoPilot.
- Create parts from 2-D using Machine commands.
- Modify parts with Blends, Chamfers, face modifications, and face booleans.
- Create and modify assemblies.
- Customize the user interface.

Prerequisites

- Must be able to interpret engineering drawings, and have an understanding of drafting concepts.
- Must have experience in the development of 2-D design using a CAD system.
- Prior use of another 3-D CAD system is helpful, but not required.

Audience

- Designers
 - Mechanical engineers
 - Industrial designers
 - Illustrators
 - Tooling designers
-

Table of Contents

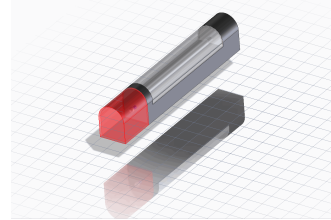
Module	1	Introducing Modeling
Module	2	Introduction to Workplane, 2-D, and Machine
Module	3	Modify 3D
Module	4	Parts and Assembly
Module	5	User Interface Customizations

Annotation using Creo Elements/Direct 18.0

Overview

Course Code WBT-3419

Course Length 16 Hours



Creo Elements/Direct Annotation is a course that will teach you 2-D drawing creating using Creo Elements/Direct Annotation. Create multiple-sheet drawings. Generate various types of primary and dependant views with different types of update modes. You will also learn how to add all types of annotations to your drawing, ranging from dimensions, additional geometry and text, symbols, pictures, and even OLE objects. You will complete the design cycle by updating a drawing after modifying the 3-D model. You will finally conclude by adding a BOM to your assembly drawing. You will have a full understanding of the Creo Elements/Direct drawing creation process.

At the end of each module, you will complete a skills assessment. The questions are used to help reinforce your understanding of the module topics and form the basis for review of any topics, if necessary.

Course Objectives

- Create drawings of 3-D models using Creo Elements/Direct Annotation
- Create and update various types of views
- Add annotations necessary to complete the drawing
- Add a BOM to an assembly drawing

Prerequisites

- Must be able to interpret engineering drawings, and have an understanding of drafting concepts
- Must have experience in the development of 2-D design using a CAD system
- Prior use or of Creo Elements/Direct Modeling

Audience

- Designers
 - Drafters
 - Mechanical engineers
 - Industrial designers
 - Illustrators
 - Tooling designers
-

Table of Contents

Module	1	Introduction To Annotation And User Interface Customizations
Module	2	Creating an Annotation Drawing
Module	3	Creating Annotation Views
Module	4	Adding Annotations
Module	5	Adding BOM
