

Update to Creo Elements/Direct 19.0 from Creo Elements/Direct 18.1

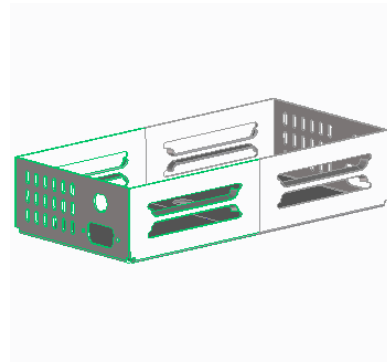
Overview

Course Code TRN-4530-T

Course Length 1 Day

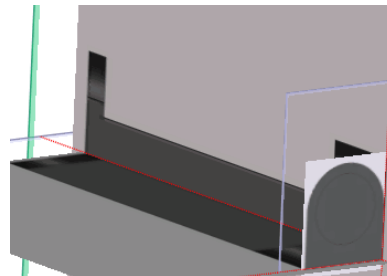
In this course, you will learn about user interface changes, improvements and additions to modeling commands, and improvements to the Sheet Metal and Annotation applications. This course is intended to introduce and feature new functions and updates to Creo Elements/Direct Modeling 19.0.

At the end of each module, you will complete a set of review questions to reinforce critical topics from that module. At the end of the course, you will complete a course assessment in Pro/FICIENCY intended to evaluate your understanding of the course as a whole.



Course Objectives

- Customize the environments and user interfaces for Modeling and Drafting applications.
- Utilize 2D Copilot extensions and shortcuts to create geometry and modify components.
- Define additional or new configuration frameworks of a model.
- Utilize new 3D Curve and modeling tool extensions to create pipes, hoses, ribs, and face parts.
- Leverage the embedded pictures in workplanes functionality to create 2-D sketches and 3-D models.
- Utilize new import and export enhancements.
- Use new sheet metal creation tool and modify sheet tools to create and unfold a new sheet metal part.
- Define template-based drawings and drawings for mirrored components.



Prerequisites

- Must have prior experience with Creo Elements/Direct Modeling
- Sheet Metal and Annotation experience is not required, but highly encouraged

Audience

- This course is intended for designers, mechanical engineers, industrial designers, and tooling designers. People in related roles will also benefit from taking this course.

Agenda

Day 1

Module	1	User Interface and Configuration Enhancements
Module	2	Modeling Extensions and Enhancements
Module	3	Miscellaneous Enhancements

Course Content

Module 1. User Interface and Configuration Enhancements

- i. Using the Recent Commands Toolbar
- ii. Viewing 3D Model Thumbnails
- iii. Hatch Pattern Visualization Enhancement
- iv. Extended 2D Copilot Capabilities and Shortcuts
- v. Using Add and Merge for Configurations
- vi. User-Defined Ribbon and Drafting UI Extensions
- vii. Administration Enhancements for Model Manager

Knowledge Check Questions

Module 2. Modeling Extensions and Enhancements

- i. 3D Curve Extensions
- ii. Creating a 3D Bridge Curve
- iii. Creating a 3D Conical Curve
- iv. Introducing Pipe and Hose Creation
- v. Creating a Pipe
- vi. Real Geometry Extensions
- vii. Introducing Sketch with Pictures
- viii. Importing Pictures
- ix. Sketching with Pictures
- x. Modeling with Pictures
- xi. Pull Enhancement
- xii. Align Enhancement
- xiii. Creating Ribs
- xiv. Select by Geometry Enhancements
- xv. Import Enhancements
- xvi. Export Enhancement

Knowledge Check Questions

Module 3. Miscellaneous Enhancements

- i. Creating Sheet Metal Part By Connect
- ii. Extensions to Sheet Metal Unfold Functions
- iii. Introducing Template-Based Drawing Enhancement
- iv. Using the Template-Based Drawing Tool
- v. Attach Drawing to Mirror Extension
- vi. Adding an Associative Bolt Circle

Knowledge Check Questions
